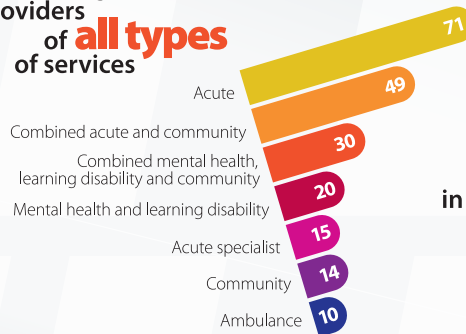


We represent
England's NHS trusts
and foundation trusts, with

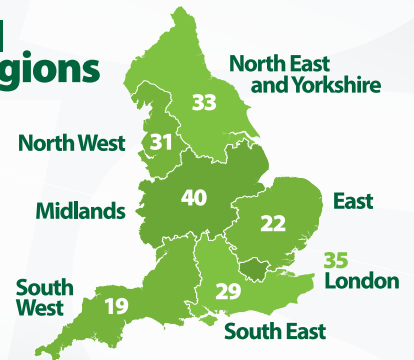
100%

in voluntary
membership

covering
providers
of **all types**
of services



in **all**
regions



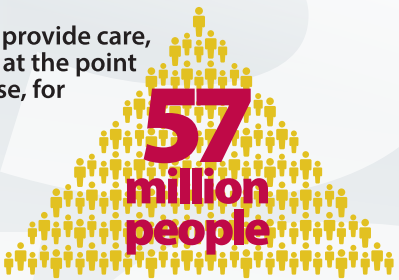
Our
members
employ
 **1.5 million
staff**

have a
combined
turnover
of

£124 billion

and provide care,
free at the point
of use, for

**57
million
people**



How we represent NHS trusts and foundation trusts

NHS Providers is the membership organisation for the NHS hospital, mental health, community and ambulance services that treat patients and service users in the NHS. We help those NHS foundation trusts and trusts to deliver high-quality, patient-focused care by enabling them to learn from each other, acting as their public voice and helping shape the system in which they operate.

NHS Providers has all trusts in England in voluntary membership, collectively accounting for £124bn of annual expenditure and employing 1.5 million people.

Our priorities

The government and the NHS must work together to deliver the next generation NHS and create a picture of health. Our five shared commitments will realise this vision...



Reaffirm commitment to the core values of the NHS to improve health and care for all and reduce inequalities

By focusing on prevention and early intervention, and integrating health and care within the work of every part of government...

we will ensure the sustainability of the NHS and secure a significant social and economic return on investment.



Build a new infrastructure programme for the NHS

By investing in eliminating the maintenance backlog and the systematic renewal of our facilities, technology and estates...

we will improve the quality and safety of patient care and deliver even greater value for money.



Nurture a thriving health and care workforce

By delivering the NHS long term workforce plan, and redoubling efforts to improve the equality, diversity and inclusion experienced by our people...

we will create the capacity and capability to deliver the best possible patient care, now and in the future.



Champion a culture of openness, improvement and innovation

By enabling a learning culture and investing in the skills for continuous improvement and evidence-based decision making...

we will improve the safety and quality of care, productivity and staff experience.



Provide care in the right place at the right time

By meeting more patient needs in the community and creating a robust social care sector...

we will support the performance and sustainability of the whole health and care system.